



BEGINNER | 1 DAY CLASS

# SPIDER WEB SWIRL

Finished Quilt: 58" x 58"

Quilt design by Lyn Brown, featuring Full Moon.

You won't mind having this spider web around the house! Lyn's design invites you to play with contrast and texture. Beginners will learn an essential quilt block and experienced quilters will whip up easy-and-fun décor!



P4347 3S-White Silver

P4347 55S-Charcoal Silver

P4349 213S-Onyx Silver

Q4413 3S-White Silver

Q4414 3S-White Silver

Q4415 4S-Black Silver

Q4453 3S-White Silver

Q4453 213S-Onyx Silver

G8555 213S-Onyx Silver

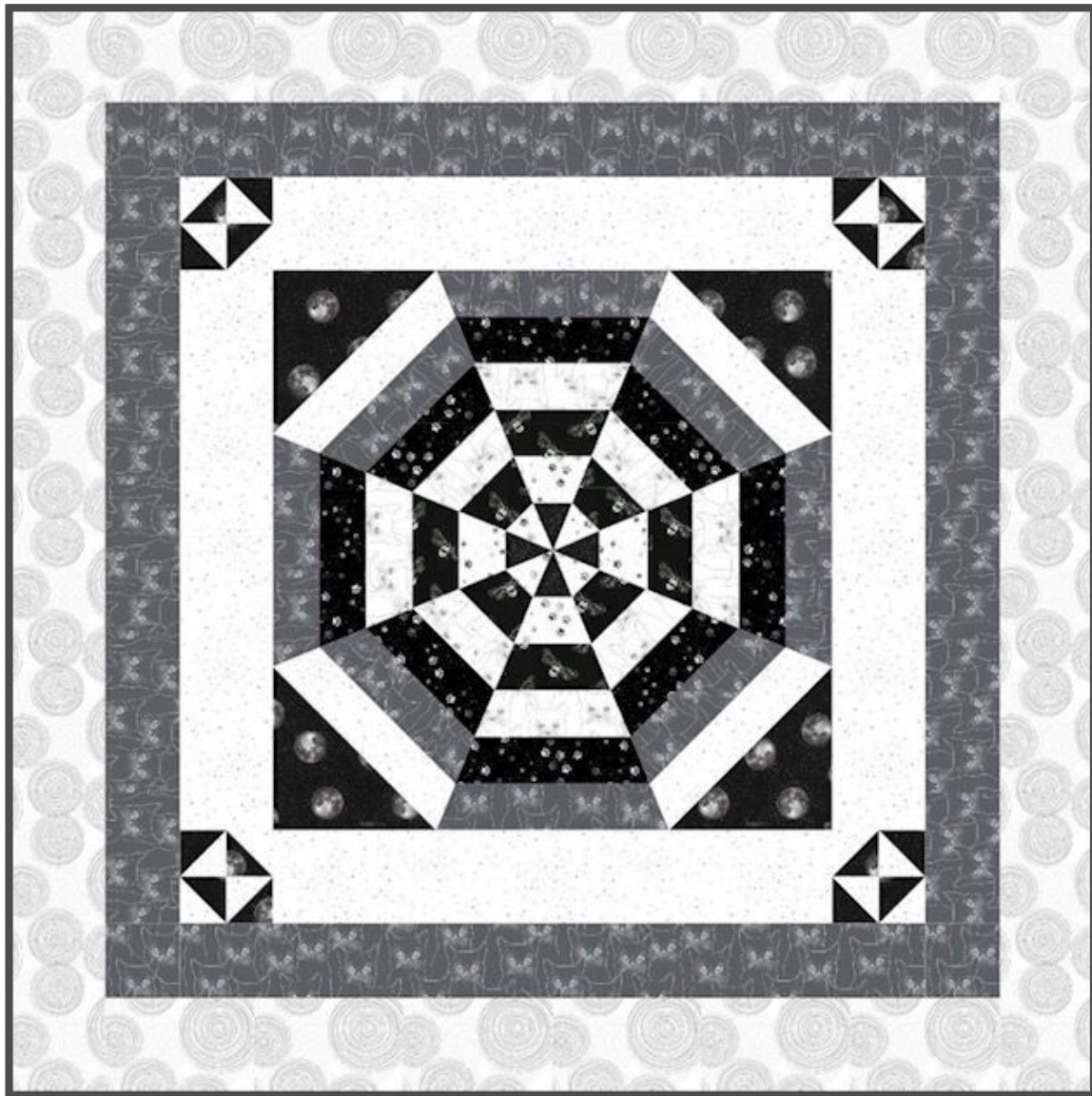
FABRICS	1 KIT	15 KITS
P4347 3S-White Silver	3/8 Yard	1 Bolt
P4347 55S-Charcoal Silver	1 Yard	1 Bolt
P4349 213S-Onyx Silver	3/8 Yard	1 Bolt
Q4413 3S-White Silver	1 Yard	1 Bolt
Q4414 3S-White Silver	1 Yard	1 Bolt
Q4415 4S-Black Silver	3/8 Yard	1 Bolt
Q4453 3S-White Silver	3/8 Yard	1 Bolt
Q4453 213S-Onyx Silver	3/8 Yard	1 Bolt
G8555 213S-Onyx Silver	3/4 Yard*	1 Bolt

\* includes binding

*Hollman*  
CALIFORNIA-INTERNATIONAL FABRICS



Full Moon  
SpiderWeb Swirl



Finished Size: 58" X 58"

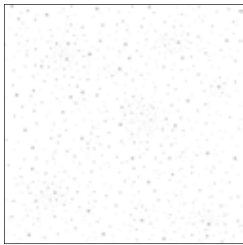
# Full Moon SpiderWeb Swirl

(58' X 58')

## Fabric Requirements

FABRIC 1	Q4413-3S	White-Silver (Stars)	1 Yard
FABRIC 2	P4347-55S	Charcoal Silver (Grey Cat)	1 Yard
FABRIC 3	Q4453-213S	Onyx-Silver (Paws)	3/8 Yard
FABRIC 4	P4347-3S	White-Silver (Cats)	3/8 Yard
FABRIC 5	Q4415-4S	Black-Silver (Bees)	3/8 Yard
FABRIC 6	Q4453-3S	White-Silver (Paws)	3/8 Yard
FABRIC 7	G8555-213S	Onyx-Silver (Stardust)	3/4 Yard
FABRIC 8	P4349-213S	Onyx Silver (Moon)	3/8 Yard
FABRIC 9	Q4414-3S	White Silver (Swirls)	1 Yard

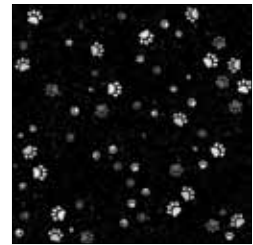
\*Also needed: Kaleidoscope Ruler and 24" Ruler



Q4413-3S



P4347-55S



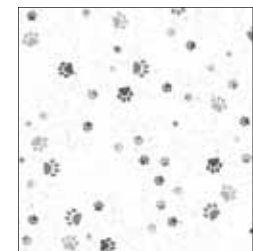
Q4453-213S



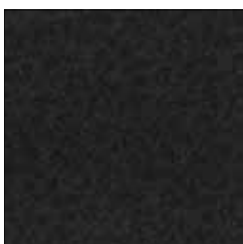
P4347-3S



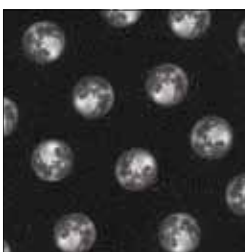
Q4415-4S



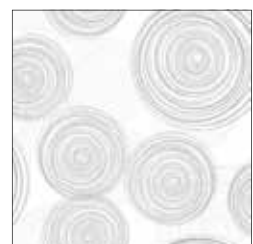
Q4453-3S



G8555-213S



P4349-213S



Q4414-3S



# Full Moon SpiderWeb Swirl

## Cutting:

FABRIC 1                    Q4413-3S    White-Silver (Stars)

2 ea. 3" WoF Strips

2 ea. 7" Squares (Y)

4 ea. 5 1/2" X 30 1/2" Strips (Z)

FABRIC 2                    P4347-55S    Charcoal Silver (Grey Cat)

4 ea. 3" WoF Strips

5 ea. 4 1/2" X WoF Strips

FABRIC 3                    Q4453-213S    Onyx-Silver (Paws)

4 ea. 3" WoF Strips

FABRIC 4                    P4347-3S    White-Silver (Cats)

4 ea. 3" WoF Strips

FABRIC 5                    Q4415-4S    Black-Silver (Bees)

4 ea. 3" WoF Strips

FABRIC 6                    Q4453-3S    White-Silver (Paws)

4 ea. 3" WoF Strips

FABRIC 7                    G8555-213S    Onyx-Silver (Stardust)

2 ea. 3" WoF Strips

7 ea. 2 1/2" Strips (Binding)

FABRIC 8                    P4349-213S    Onyx Silver (Moon)

2 ea. 9 5/8" Squares (X) Each cut on one diagonal to make 4 triangles

2 ea. 7" Squares (Y)

FABRIC 9                    Q4414-3S    White Silver (Swirls)

6 ea. 5 1/2" WoF Strips

\* WoF = Width of Fabric

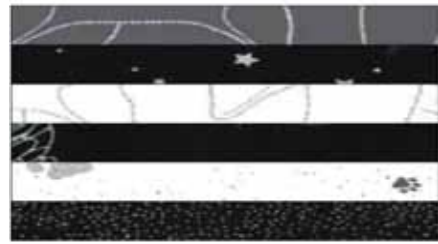
# Full Moon SpiderWeb Swirl

## SpiderWeb Block Assembly:

1. Stitch the 3" strips into six strip Panels. Panel A should be Fabric 1 - 6 in order. Panel B should be Fabric 2 - 7 in order. (Note the Cats should be upside down in panels.) Panels should be 15 1/2" by WoF. Make two sets of two panels, A and B. The A panel has light in the outer strips and the B panel has dark in the outer strips. Press the A set toward its top edge and the B set toward its bottom edge.



Panel A  
(Press toward  
top)



Panel B  
(Press toward  
bottom)

2. Using the kaleidoscope ruler, place the point at the lower edge of the Strip set about 8 inches from the selvage edge and line up the lines of the ruler with (parallel to) your seam lines. Place the 24" ruler along side the kaleidoscope ruler to extend your cutting line. When the 24" ruler is correctly positioned, remove the kaleidoscope ruler and cut along the 24" ruler. Replace the kaleidoscope ruler, now placing the 24" ruler on the opposite side of the kaleidoscope ruler. Cut the other side of your wedge.

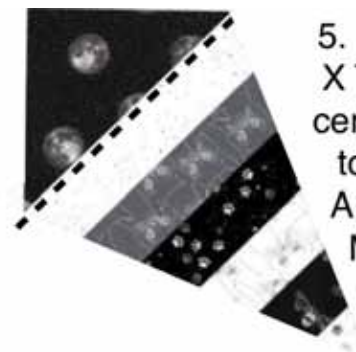
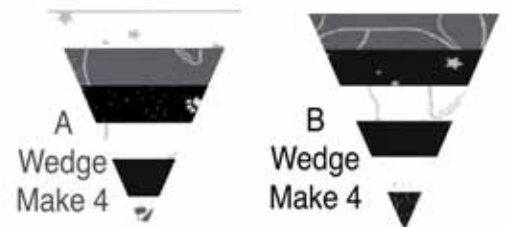


Step 2. Cut first  
side of wedge...



Then cut second  
side of wedge

3. Now scoot your kaleidoscope ruler 14" to 16" along the strip set so that when you place your 24" ruler alongside you can cut your full wedge edge without waste. Cut a second wedge as before.
4. Repeat to cut two wedges from each strip set. That's a total of 4 A Wedges and 4 B Wedges.
5. Stitch an X triangle to an A Wedge. Match the center of the long edge of the X Triangle to the center of the short or top edge of the A Wedge. Make 4.



5. Stitch an  
X Triangle,  
centered, to  
top of an  
A Wedge.  
Make 4

# Full Moon SpiderWeb Swirl

6. Stitch an A wedge and B wedge into a pair. Make four A-B pairs all with the same orientation. Stitch pairs into Halves. Stitch the Halves together to form block, pinning at center to match. Block should measure 30 1/2".

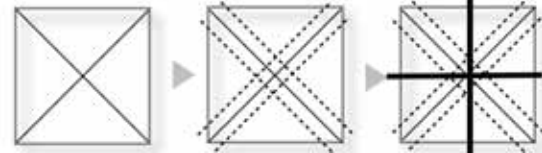


6. Stitch wedges into A-B pairs. Make 4. Stitch pairs into halves. Make 2. Stitch halves together to complete block. Pin center to match.



## Inner Border with Broken Dishes Blocks:

1. Fold or mark the lighter color X square on both diagonals as a guide. Layer one dark square with the light square RST. Stitch 1/4" on both sides of both diagonals. Cut stitched squares in half parallel to both edges. Then cut on the diagonals. This yields 8 ea. Half Square Triangle units. Trim units to 3" unfinished size. Repeat to make 16 HSTs.
2. Stitch 8 pairs of HSTs as shown at right, watching orientation.
3. Stitch the pairs of HST into 4 Broken Dishes Blocks. The Blocks should measure 5 1/2".
4. Trim 2 of the Z strips to the length of the quilt and two to the width of the quilt. Stitch the "Length" Z strips, one to the right and one to the left side of the quilt. Add a Broken Dishes Block (Step 3) to both short ends of the 2 "Width" Z strips. Add these strips to the to the sides of the quilt. Quilt should now measure 40 1/2" X 40 1/2".



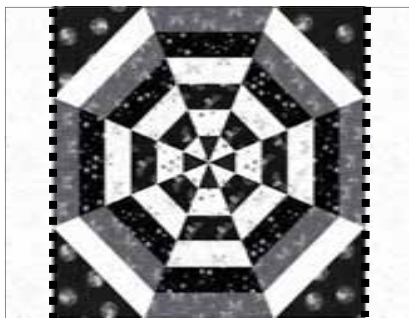
1. Mark lines. Stitch. Cut to yield 8 HSTs. Repeat to make 16 HSTs.



2. Stitch 2 HSTs together as shown.



3. Stitch HST pairs into Broken Dishes Blocks. Make 4.



4. Add Inner Border



# Full Moon SpiderWeb Swirl

## Center Border:

1. Trim 2 of the Fabric 2 strips to the length of the quilt. (Should be 40 1/2".) (Note the Cats should be facing out.) Stitch these strips to the sides of the quilt.
2. Stitch the 3 remaining Fabric 2 strips together. Cut into two pieces to match the width of the quilt. (Should be 48 1/2".) Stitch these to the top and bottom of the quilt. Quilt should now measure 48 1/2".



Add  
Center  
Border



## Outer Border:

1. Trim 2 of the Fabric 9 strips to the length of the quilt. (Should be 48 1/2".) Stitch these strips to the sides of the quilt.
2. Stitch the 3 remaining Fabric 9 strips together. Cut into two pieces to match the width of the quilt. (Should be 58 1/2".) Stitch these to the top and bottom of the quilt. Quilt should now measure 58 1/2".



Add  
Outer  
Border



## Finishing The Quilt:

1. Layer Quilt with desired Backing and Batting. Quilt as desired.
2. Bind with 2 1/2" Fabric 7 Strips.